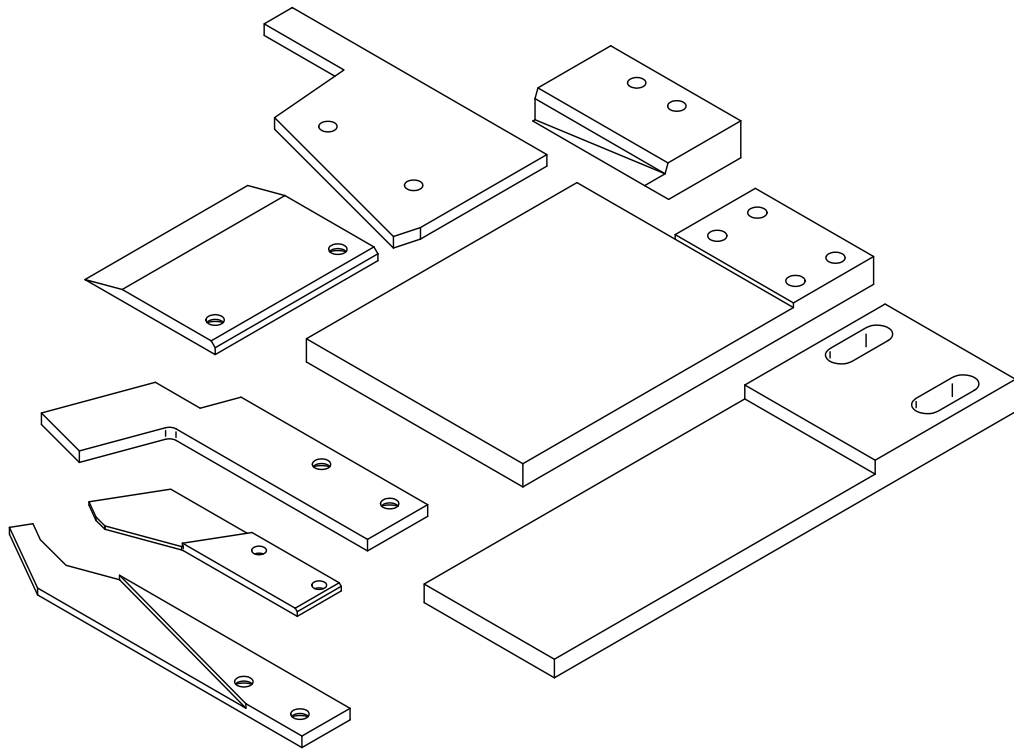


Saspi



**When quoting or placing an order,
specify the following:**

- **Catalog & Page Number**
- **Machine Size**
- **Key Number**
- **Quantity**
- **Part Number (if available)**

**Please provide sample parts or prints
for items not found in this catalog.**

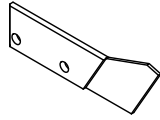
We at Star Metal Products look forward to serving you, and encourage you to review the following terms and conditions to ensure a mutually successful business transaction.

- Terms are net 30 days from shipment, F.O.B. Ourdock, Westlake, Ohio Freight Collect. All prices subject to change without notice.
- Our minimum billing is \$50.00
- Quotations are valid for 90 days unless otherwise specified.
- Star Metal Products Blanket Order Policy
Duration: Blanket Orders will be held for a maximum time period of six months. Any line item open six months from the date of receipt of customer order will ship automatically. Duration of blanket order may extend up to one year, only if specific release quantities and release dates are supplied with customer order.

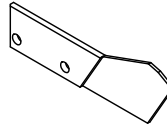
Releases: Upon completion of job order, 25% of each line item (with a minimum of 1 piece) will be shipped to customer. The balance of each line item will be held for release by customer within the six month time frame.
- Cancellation will be subject to a charge for any applicable material used and labor employed for work in progress.
- Returns: We regret that positively no tooling may be returned without factory authorization. Returns must be made within 60 days of receiving merchandise. We will not be responsible for shipping charges incurred by customers that deviate from this policy. We reserve the right to only repair tooling accepted under these conditions.

GV2-10

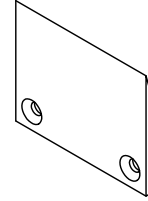
FINGER
PART #: 1176M3



FINGER
PART #: 1177M

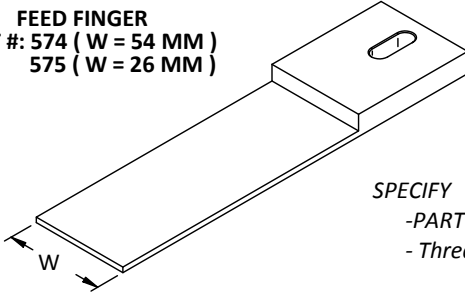


FINGER
PART #: 11042182



GV3-20

FEED FINGER
PART #: 574 (W = 54 MM)
575 (W = 26 MM)

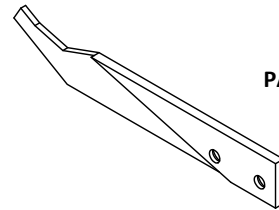


SPECIFY
-PART #
- Thread Size

Thread Size
M4
M5
M6
M8
M10
M12

GV4-40

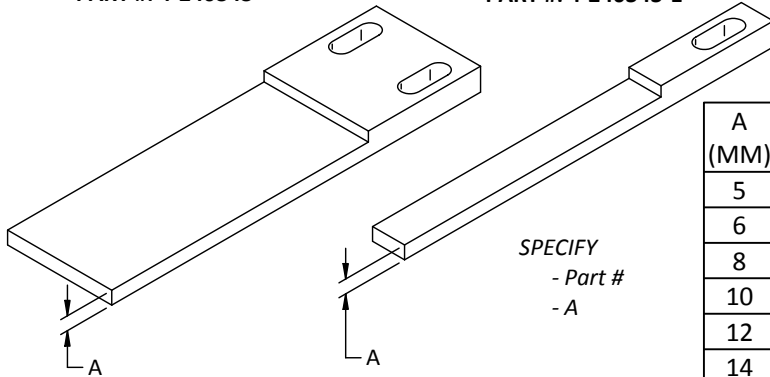
RAIL
PART #: 4-584



GV5-40

PUSHER FINGER
PART #: 4-240343

PUSHER FINGER
PART #: 4-240343-1

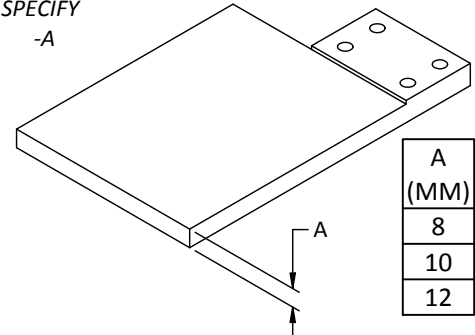


SPECIFY
- Part #
- A

A (MM)
5
6
8
10
12
14

FINGER
PART #: 4-240508

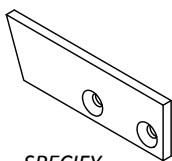
SPECIFY
-A



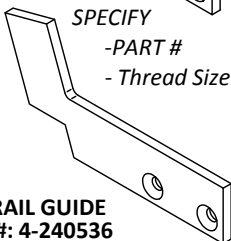
A (MM)
8
10
12

Thread Size
M6
M8
M10
M12
M14
M16
M18

RAIL GUIDE
PART #: 4-240537



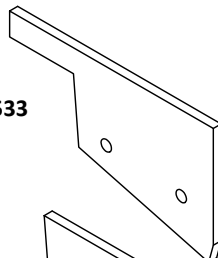
SPECIFY
-PART #
- Thread Size



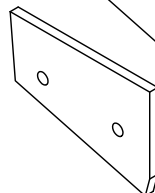
TOP RAIL GUIDE
PART #: 4-240536

GUIDE
PART #: 4-240533

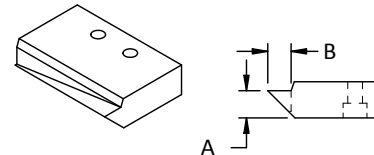
SPECIFY
-PART #



GUIDE
PART #: 4-240534



SPECIFY
-PART #



Part #	A (MM)	B (MM)
24034801	16	14
24034802	14	12
24034803	12	10
24034804	10	9
24034805	8	7
24034806	6	5