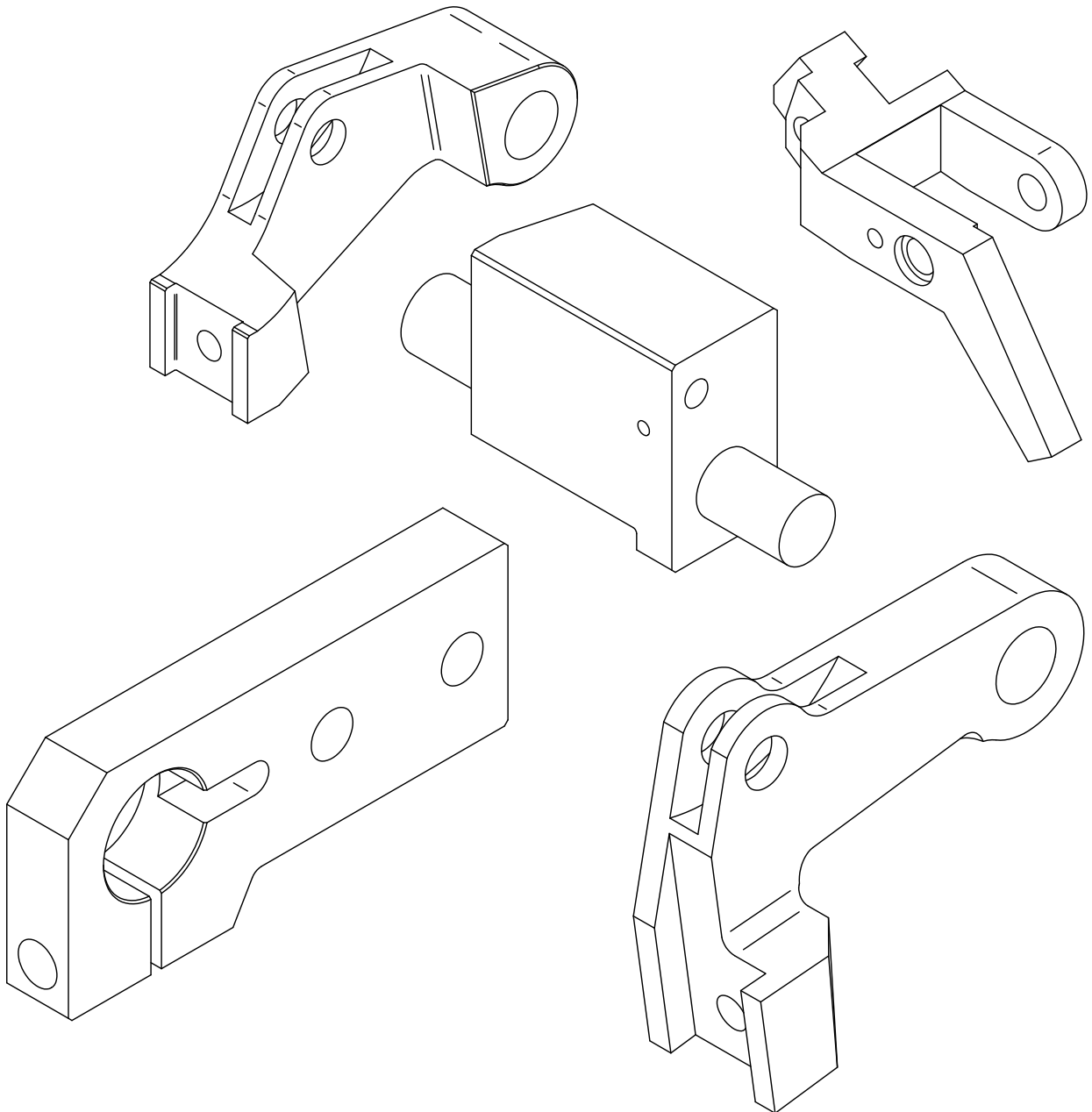


Sacma



**When quoting or placing an order,
specify the following:**

- **Catalog & Page Number**
- **Machine Size**
- **Key Number**
- **Quantity**
- **Part Number (if available)**

**Please provide sample parts or prints
for items not found in this catalog.**

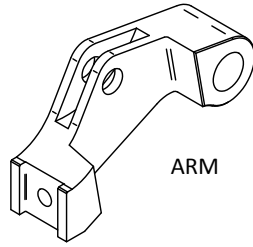
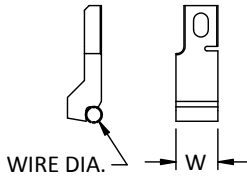
We at Star Metal Products look forward to serving you, and encourage you to review the following terms and conditions to ensure a mutually successful business transaction.

- Terms are net 30 days from shipment, F.O.B. Ourdock, Westlake, Ohio Freight Collect. All prices subject to change without notice.
- Our minimum billing is \$50.00
- Quotations are valid for 90 days unless otherwise specified.
- Star Metal Products Blanket Order Policy
Duration: Blanket Orders will be held for a maximum time period of six months. Any line item open six months from the date of receipt of customer order will ship automatically. Duration of blanket order may extend up to one year, only if specific release quantities and release dates are supplied with customer order.

Releases: Upon completion of job order, 25% of each line item (with a minimum of 1 piece) will be shipped to customer. The balance of each line item will be held for release by customer within the six month time frame.
- Cancellation will be subject to a charge for any applicable material used and labor employed for work in progress.
- Returns: We regret that positively no tooling may be returned without factory authorization. Returns must be made within 60 days of receiving merchandise. We will not be responsible for shipping charges incurred by customers that deviate from this policy. We reserve the right to only repair tooling accepted under these conditions.

ARMS & FINGERS

FINGER
(RIGHT HAND SHOWN)



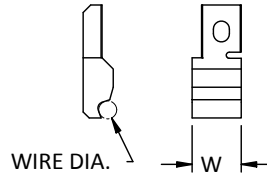
SPECIFY
- PART #
- RIGHT OR LEFT HAND
- WIRE DIA.
- W

SPECIFY
- PART #

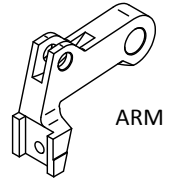
Machine Size	Finger	Arm
SP25U	3-2750	3-2750FH
SP35U	3-2760	3-2760FH

ARMS & FINGERS

FINGER
(RIGHT HAND SHOWN)

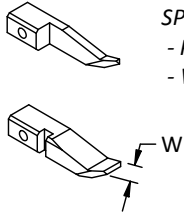


SPECIFY
- PART #
- W
- WIRE DIA.



Machine Size	Finger	Arm
SP-17, 130, 140, 150, 160	3-2710	3-2710FH
SP-15, 27, 28, 230, 240, 250, 260	3-2720	3-2720FH
SP-330, 340, 350, 360	3-2730	3-2730FH
SP-47, 48, 450, 460	3-2740	3-2740FH

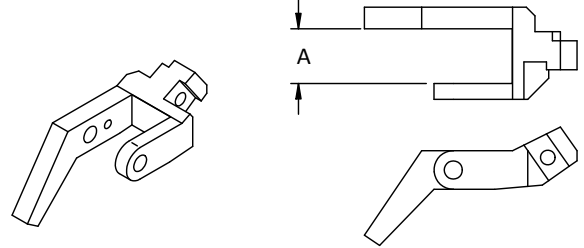
FINGERS



SPECIFY
- PART #
- W

Machine Size	Part #
SP-01	3-2700
SP-11	3-2701
SP-21	3-2702
SP-31	3-2703

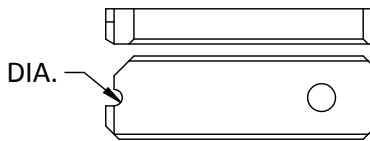
FINGER HOLDERS



Machine Size	Part #	A
SP-01	3-2704-14	14 MM
SP-01	3-2704-20	20 MM
SP-11	3-2705-16	16 MM
SP-11	3-2705-24	24 MM
SP-21	3-2706-22	22 MM
SP-21	3-2706-30	30 MM
SP-31	3-2707-27	27 MM
SP-31	3-2707-31	31 MM
SP-31	3-2707-40	40 MM

SPECIFY
- PART #

CUTOFF KNIVES

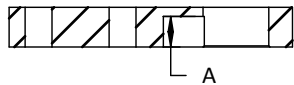


SPECIFY:
- PART #
- DIA.

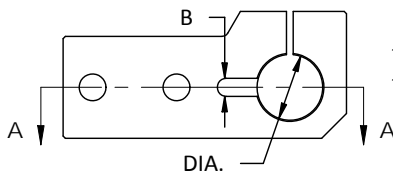
Machine Size	Knife	Knife w/ Carbide
SP-01	3-2600	3-2600C
SP-11	3-2601	3-2601C
SP-21	3-2602	3-2602C
SP-31	3-2603	3-2603C

CUTTER HOLDERS

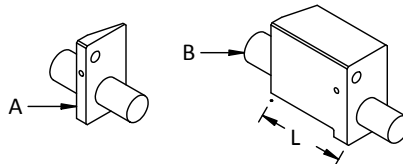
SECTION A-A



SPECIFY
- MACHINE SIZE
- ADD "S" FOR PARTS W/
CUT OUT
- A & B (AS NEEDED)
- DIA.



WIRE STOCK GAUGE



SPECIFY
- PART #
- L

Machine Size	A	B
SP-230, 250, 250U, 260, 260U	3-SP200WSG	3-SP200WSG1
SP-330, 340, 350, 350, 360	3-SP300WSG	3-SP300WSG1