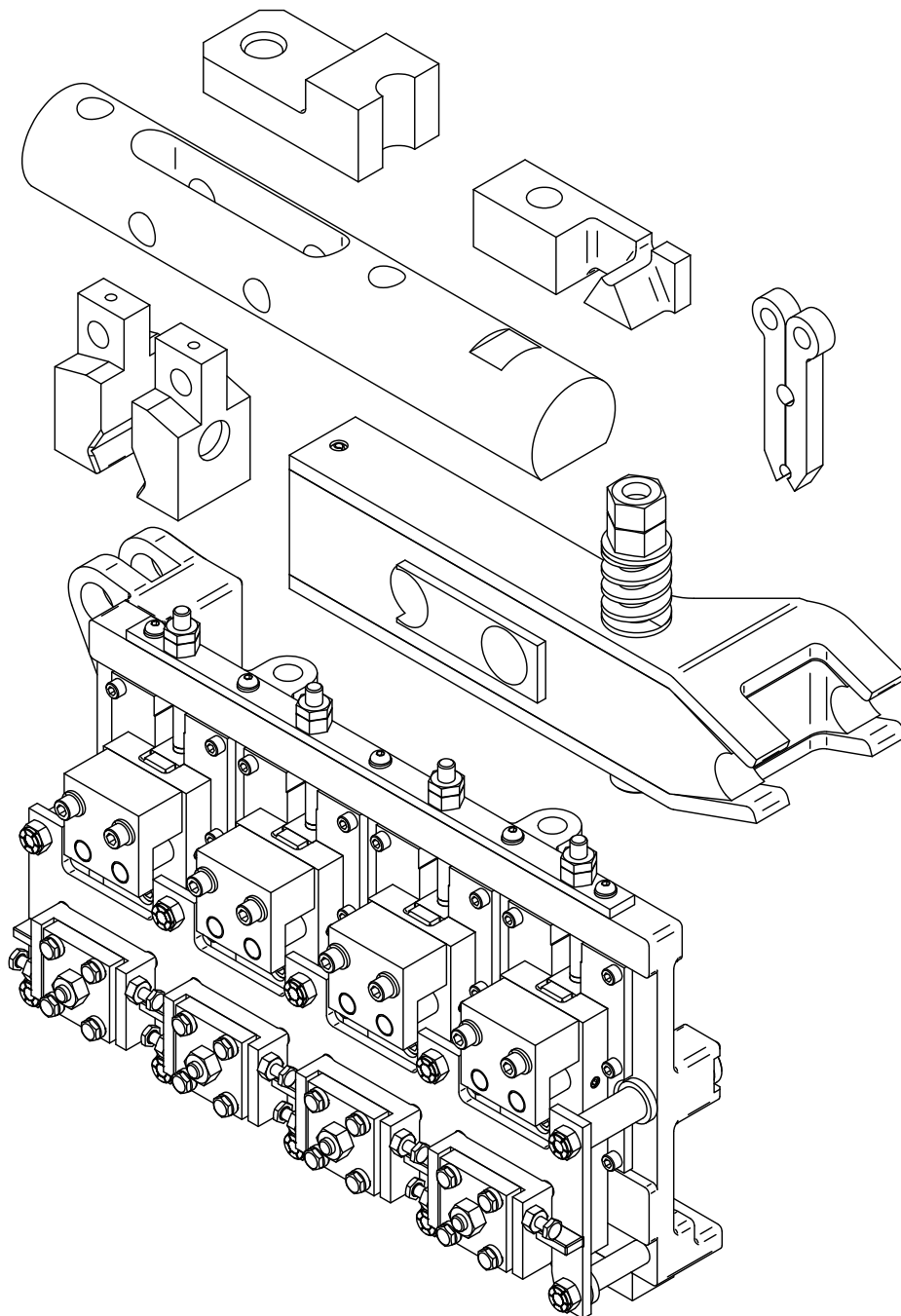


Waterbury Farrel



**When quoting or placing an order,
specify the following:**

- **Catalog & Page Number**
- **Machine Size**
- **Key Number**
- **Quantity**
- **Part Number (if available)**

**Please provide sample parts or prints
for items not found in this catalog.**

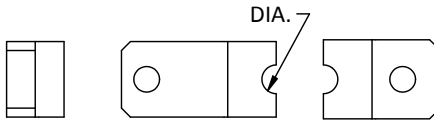
We at Star Metal Products look forward to serving you, and encourage you to review the following terms and conditions to ensure a mutually successful business transaction.

- Terms are net 30 days from shipment, F.O.B. Ourdock, Westlake, Ohio Freight Collect. All prices subject to change without notice.
- Our minimum billing is \$50.00
- Quotations are valid for 90 days unless otherwise specified.
- Star Metal Products Blanket Order Policy
Duration: Blanket Orders will be held for a maximum time period of six months. Any line item open six months from the date of receipt of customer order will ship automatically. Duration of blanket order may extend up to one year, only if specific release quantities and release dates are supplied with customer order.

Releases: Upon completion of job order, 25% of each line item (with a minimum of 1 piece) will be shipped to customer. The balance of each line item will be held for release by customer within the six month time frame.
- Cancellation will be subject to a charge for any applicable material used and labor employed for work in progress.
- Returns: We regret that positively no tooling may be returned without factory authorization. Returns must be made within 60 days of receiving merchandise. We will not be responsible for shipping charges incurred by customers that deviate from this policy. We reserve the right to only repair tooling accepted under these conditions.

KNIFES

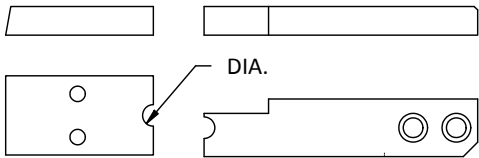
CUTOFF RETURN



SPECIFY:
- PART #
- DIA.

Size	Cutoff	Cutoff w/ Carbide	Return
3/16	3-2400C	3-2400CC	3-2400R
1/4	3-2401C	3-2401CC	3-2401R
5/16	3-2402C	3-2402CC	3-2402R
3/8	3-2403C	3-2403CC	3-2403R
1/2	3-2404C	3-2404CC	3-2404R

RAYCARL KNIFES

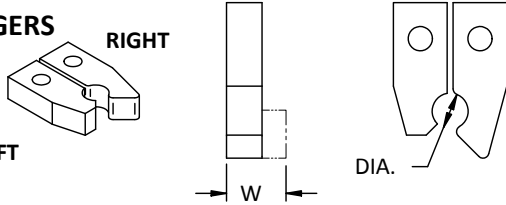


SPECIFY:
- PART #
- DIA.

Size	Cutoff	Cutoff w/ Carbide	Return
# 45	3-1904C	3-1904CC	3-1904R
# 100	3-2407C	3-2407CC	3-2407R

RAYCARL

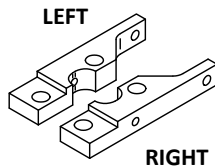
FINGERS



SPECIFY:
- PART #
- RIGHT OR LEFT
- D
- W

Size	Finger	Finger Holder
# 45	3-1903	3-1900
# 100	3-1904	3-1901

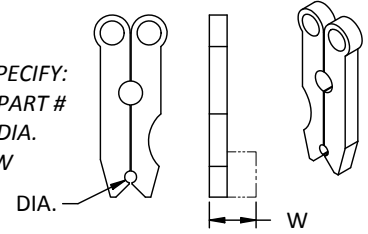
FINGER HOLDERS



TOGGLE FINGERS - FULL STYLE

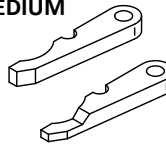
Size	Part #
0	3-1200
1	3-1203
2	3-1206

SPECIFY:
- PART #
- DIA.
- W



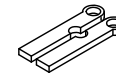
NYLON FINGERS

MEDIUM



SHORT

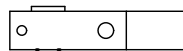
CARRIER FINGERS



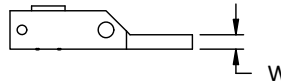
Machine Size	Part #
0 BLANK	3-1200BS
0 FINISH	3-1200FS
1 BLANK	3-1203BS
1 FINISH	3-1203FS
2 BLANK	3-1206BS
2 FINISH	3-1206FS

CARRY-OVER BLOCKS & FINGERS

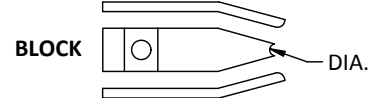
MEDIUM



SHORT

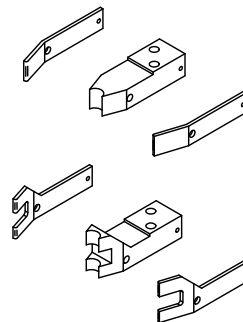


FINGER

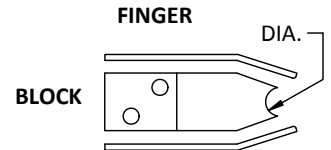


Size	Block	Finger
3/16	3-1068	3-1067
1/4	3-1069	3-1070
5/16	3-1071	3-1072
3/8	3-1073	3-1074

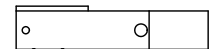
SPECIFY:
- PART #
- MEDIUM OR SHORT
(W IF SHORT)
- DIA.



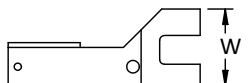
SPECIFY:
- PART #
- MEDIUM OR LONG
(W IF LONG)
- DIA.



MEDIUM



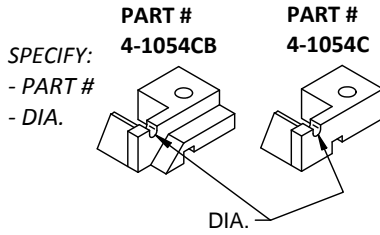
LONG



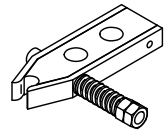
Size	Block	Finger
1/2	3-1076M	3-1075M
1/2 LONG WORK	3-1077	3-1078

MACHINE SIZE NO.1

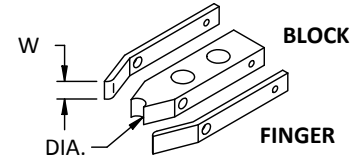
CARRIER BLOCKS



TRIMMER BLOCKS & FINGERS



SPECIFY:
- PART #
- W
- DIA.

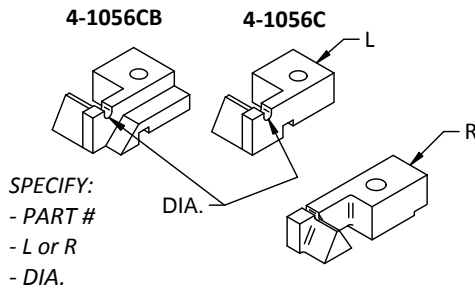


FINGER: 4-1053 **BLOCK: 4-1054** **ASSEMBLY: 4-1054A** **OVERALL LENGTH: 3-3/16**

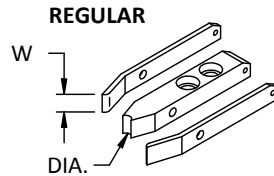
ALL ASSEMBLIES INCLUDE:
BLOCK, FINGERS, BOLT, SPRING, & NUTS

MACHINE SIZE NO.2

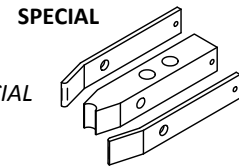
CARRIER BLOCKS



TRIMMER BLOCKS & FINGERS



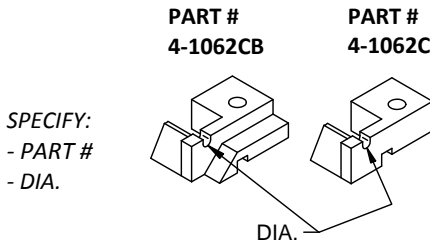
SPECIFY:
- PART #
- REGULAR OR SPECIAL
- W
- DIA.



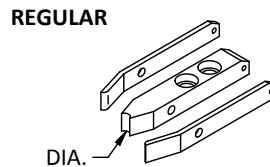
	Finger	Block	Assembly	Over All Length
Regular	4-1056MF	4-1056MB	4-1056MA	5 5/8
Long	4-1055SP	4-1056SP	4-1056SPA	3 3/4

MACHINE SIZE NO.3

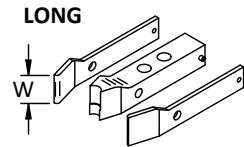
CARRIER BLOCKS



TRIMMER BLOCKS & FINGERS



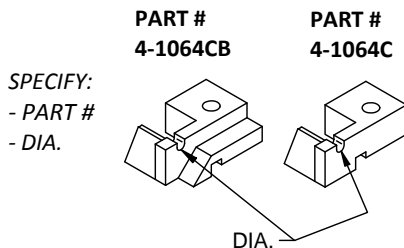
SPECIFY:
- PART #
- REGULAR OR LONG
(W IF LONG)
- DIA.



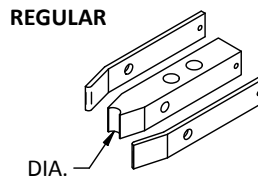
	Finger	Block	Assembly	Over All Length
Regular	4-1059M	4-1060M	4-1060MA	5-3/4
Long	4-1061L	4-1062L	4-1062A	5-3/4

MACHINE SIZE NO.4

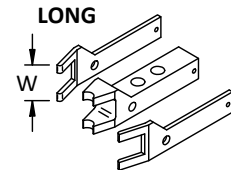
CARRIER BLOCKS



TRIMMER BLOCKS & FINGERS



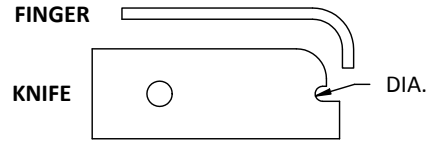
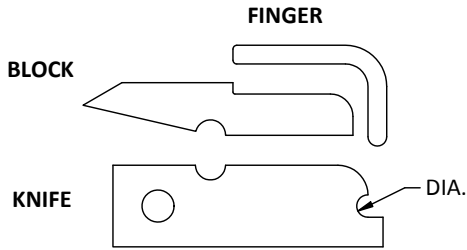
SPECIFY:
- PART #
- REGULAR OR LONG
(W IF LONG)
- DIA.



	Finger	Block	Assembly	Over All Length
Regular	4-1063M	4-1064M	4-1064MA	6-3/4
Long	4-1065	4-1066	4-1066A	6-3/4

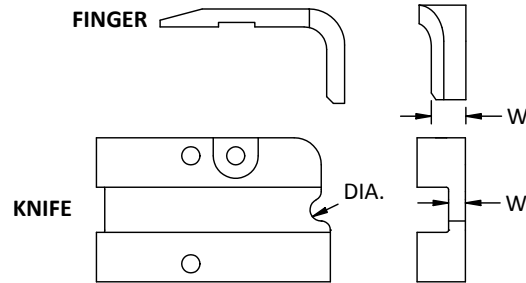
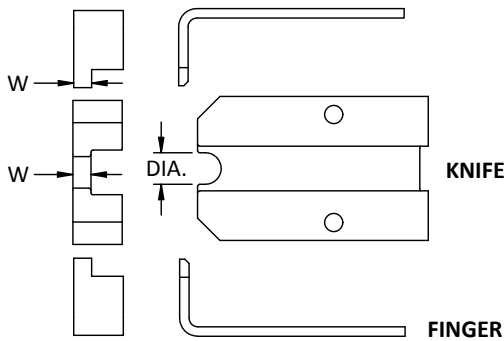
CUTOFF KNIFE

SPECIFY PART #, W, & DIA.



Machine Size	Knife	Knife w/ Carbide	Block	Finger
#3 UNIVERSAL	3-2809	3-2809C	3-2909B	3-2909
#4 TRANSFER	3-2810	3-2810C	3-2910B	3-2910
#10 HI-PRO	3-2811	3-2811C	3-2911B	3-2911

Machine Size	Knife	Knife w/ Carbide	Finger
1/8 HEADMASTER	3-2800	3-2800C	3-2900
#0 TOGGLE	3-2801	3-2801C	3-2901
3/16 HI-PRO	3-2802	3-2802C	3-2902
#1 TOGGLE	3-2803	3-2803C	3-2903
#2 TOGGLE	3-2804	3-2804C	3-2904
5/16 HI-PRO	3-2805	3-2805C	3-2905
#3 TOGGLE	3-2806	3-2806C	3-2906
3/16 HEADMASTER	3-2807	3-2807C	3-2907
#2 TOGGLE	3-2808	3-2808C	3-2908
1/2 SDDS	3-2812	3-2812C	3-2912

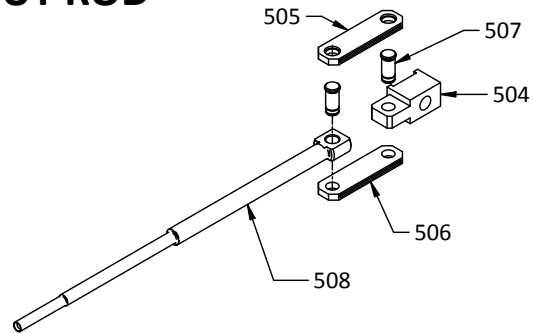


Machine Size	Knife	Finger
#2	2-1612	2-1613
#3	2-1712	2-1713
#4	2-1812	2-1813
#5	2-1912	2-1913

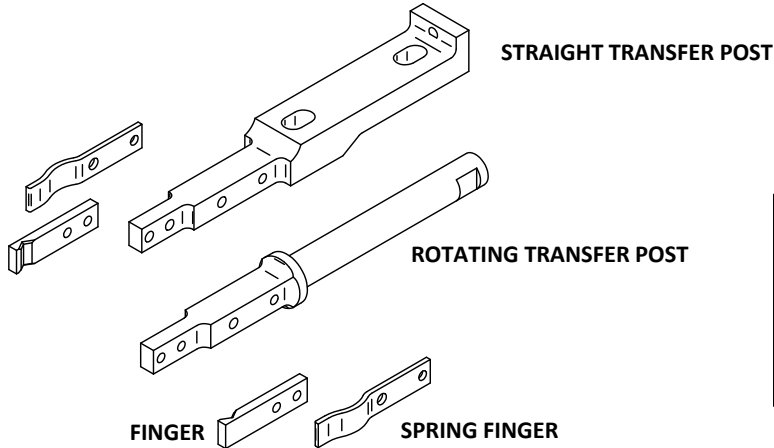
Machine Size	Knife	Finger
#2	2-2100	2-2101
#3	2-1507	2-2202
#4	2-1508	2-2303
#5	2-1509	2-2404
#6	2-1510	2-2505

1/4 PUSH OUT ROD

Key #	Part #	Description
504	0206004P003A	BLOCK
505	0206004P004A	LINK
506	0206004P004B	LINK
507	0206004P005A	PIN
508	0206004P002A	ROD



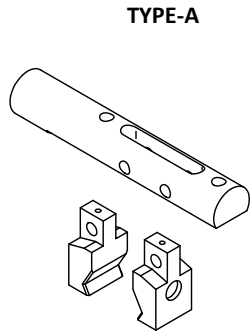
TRANSFER ASSEMBLY



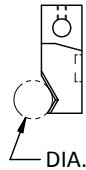
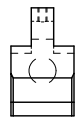
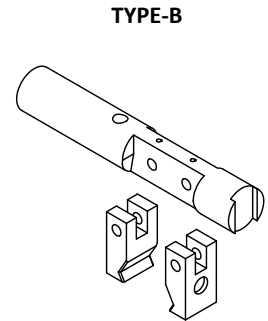
SPECIFY
- PART #

Machine Size	Rotating Post	Straight Post	Spring Finger
2	2-1511	2-1520	2-1523
3	2-1512	2-1521	2-1524
4	2-1513	2-1522	2-1525
5	2-1514	2-1531	2-1529

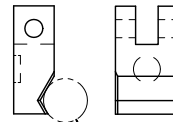
"HI-PRO"



Machine Size	Post A	Finger A	Post B	Finger B
2	2-1402	2-1307	2-1402B	2-1307B
3	2-1403	2-1308	2-1403B	2-1308B
4	2-1404	2-1309	2-1404B	2-1309B
5	2-1405	2-1310	2-1405B	2-1310B
6	2-1406	2-1311	2-1406B	2-1311B

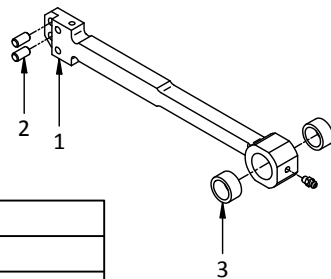


SPECIFY
- PART #
- DIA. (FOR FINGERS)



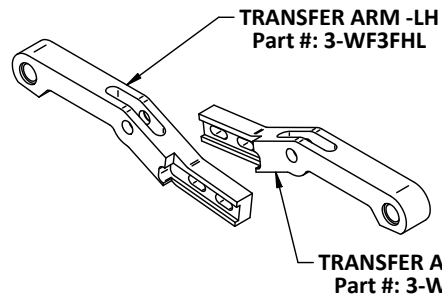
TRANSFER ARM ASSEMBLY

SPECIFY
- MACHINE # 1 or 2
- KEY #



Key #	Description
1	ARM
2	PIN
3	BEARING

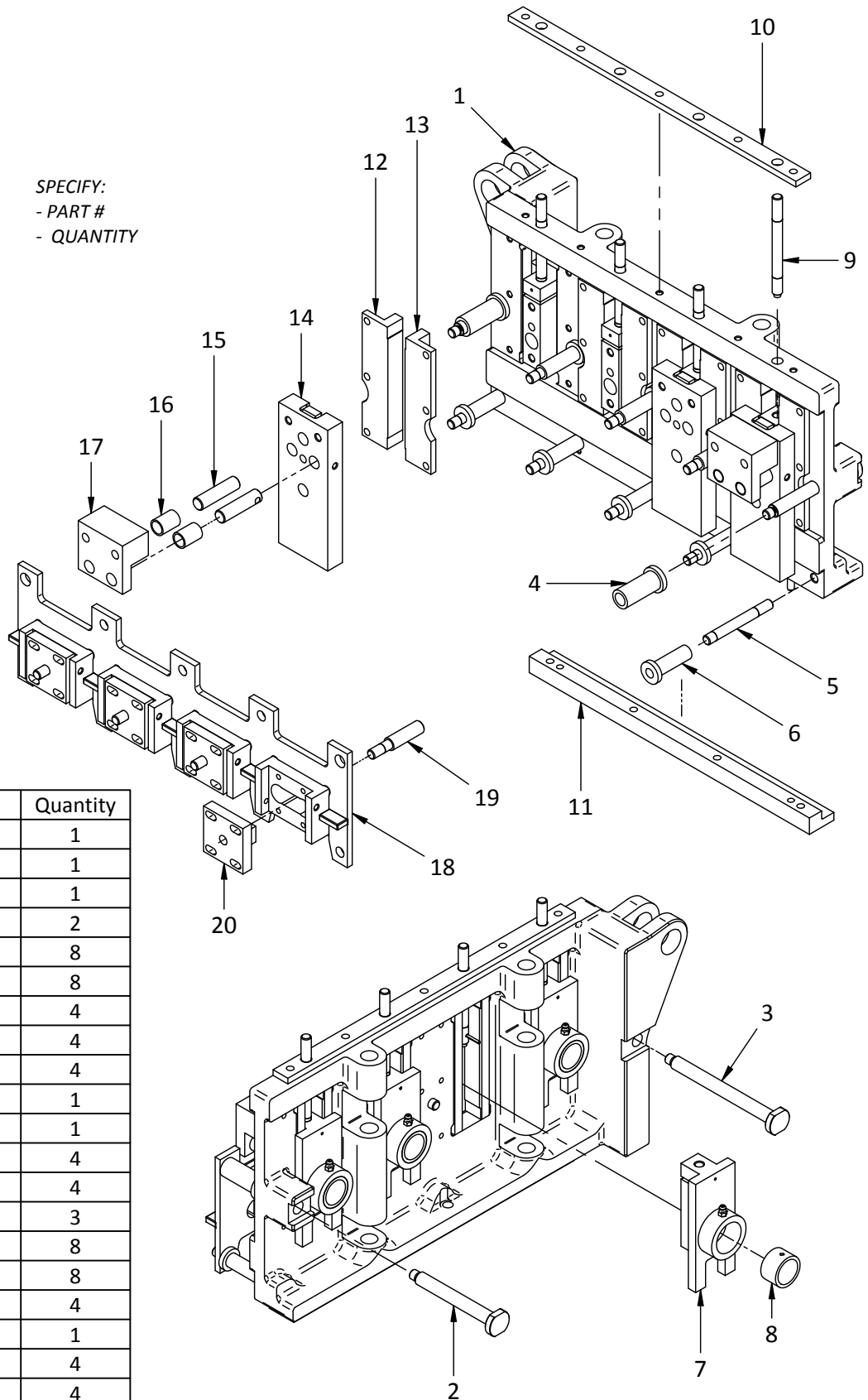
3 PROGRESSIVE HEADER TRANSFER ARM



SPECIFY
- PART #

#3 PROGRESSIVE HEADER

SPECIFY:
 - PART #
 - QUANTITY



Key #	Ref. Part #	Quantity
1	8541-9501	1
2	8541-9105	1
3	8541-9108	1
4	8541-9106	2
5	8541-8904	8
6	8541-9107	8
7	8541-9401	4
8	8541-9404	4
9	8541-9804	4
10	8541-9604	1
11	8541-9601	1
12	8541-9502	4
13	8541-9503	4
14	8541-9805	3
15	8541-9803	8
16	8541-9702	8
17	8541-8903	4
18	8541-9705	1
19	8541-8902	4
20	8541-9703	4